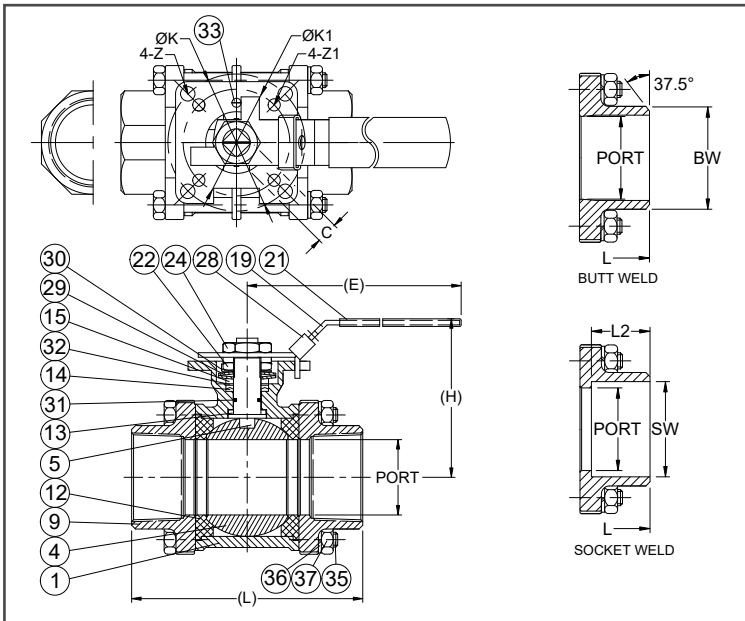
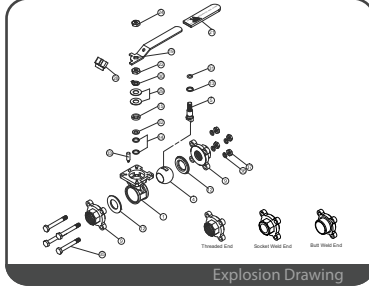
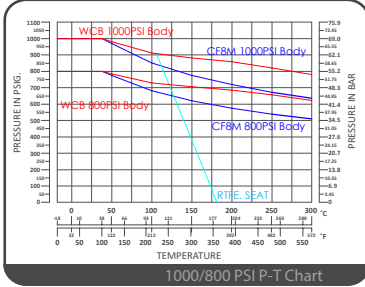


## Direct Mount Ball Valve 1000/800 PSI / Full Bore Fugitive Emission

### N-658



1/4" ~ 4"  
DN 8 ~ 100



### FEATURES

- Investment Cast Body Construction
- 3 Pieces Body Design
- Integral Seat & Body Seal Design
- ISO 5211 Direct Mounting Flange
- Blow-Out-Proof Stem Design & Anti-Static Device
- Available for Pneumatic or Electric Actuator
- NACE MR0175 is available upon request
- Super Alloy materials for highly corrosive medium are available upon request

AUTOMATION  
AVAILABLE

OPTION

### SPECIFICATIONS

- Size Range: 1/4" ~ 4" (DN8 ~ DN100)
- End Connection: Threaded / Socket / Butt Weld Ends
- Working Pressure: 1000PSI ( CWP ) for 1/4" ~ 2"  
800SPI ( CWP ) for 2-1/2" ~ 4"
- Temperature Range: -4 to 356 °F ( -20 to 180 °C ) for RTFE.

### STANDARDS

- Design: ASME B16.34 / EN 12516-1/1/2/3
- Mounting Flange: ISO 5211
- Threaded End: NPT/ BS 21 ( BSP ) / BSPT / ISO 228-1 / DIN 2999 / ISO 7-1Rp
- Socket Weld End: ASME/ANSI B16.11
- Butt Weld End: ASME/ANSI B16.25
- Face to Face: MFG ( Option for DIN 3202 M3/S13 )
- Material: ASTM
- Pressure Testing: API 598

### CERTIFICATE

- Fugitive Emission: TA-LUFT
- Quality Assurance: ISO 9001
- Material Certificate: EN 10204-3.1 MTR
- CE Approval: PED 2014/68/EU Module H
- Canadian Certificate: CRN

### MATERIAL LIST

NO.	PART NAME	MATERIAL ( more options available )
1	BODY	ASTM A351 Gr.CF8M
4	BALL	ASTM A351 Gr.CF8M
5	STEM	SS316
9	END CAP	ASTM A351 Gr.CF8M
12	SEAT	RTFE
13	THRUST WASHER	RTFE
14	STEM PACKING	RTFE
15	GLAND BUSH	SS304
19	HANDLE	SS304
21	HANDLE COVER	VINYL GRIP
22	STEM NUT	SS304
24	HANDLE NUT	SS304
28	LOCKING PAD	SS304
29	BELLEVILLE WASHER	SUS301
30	TAB WASHER	SS304
31	O-RING	VITON
32	PACKING FOLLOWER	PTFE + 25%G.F.
33	STOP PIN	SS304
35	BODY BOLT	SS304
36	BOLT WASHER	SS304
37	BOLT NUT	SS304

### DIMENSION

		unit : mm											
SIZE	PORT	L	E	H	L2	SW	C	ØK	ØK1	Z	Z1	BW	
DN8	1/4"	11.5	63.5	112.0	73.0	10.0	14.2	9.0	50.0	36.0	7.0	6.0	13.7
DN10	3/8"	12.5	63.5	112.0	73.0	10.0	17.5	9.0	50.0	36.0	7.0	6.0	17.1
DN15	1/2"	15.0	63.5	112.0	73.0	10.0	21.8	9.0	50.0	36.0	7.0	6.0	21.3
DN20	3/4"	20.0	72.5	112.0	80.8	13.0	27.4	9.0	50.0	36.0	7.0	6.0	26.7
DN25	1"	25.0	81.0	136.0	90.5	13.0	34.1	9.0	50.0	36.0	7.0	6.0	33.4
DN32	1-1/4"	32.0	94.5	185.0	98.7	13.0	42.7	9.0	50.0	36.0	7.0	6.0	42.2
DN40	1-1/2"	38.0	108.0	197.0	115.3	13.0	49.0	14.0	70.0	50.0	9.0	7.0	48.3
DN50	2"	50.0	121.5	197.0	124.0	16.0	61.0	14.0	70.0	50.0	9.0	7.0	60.3
DN65	2-1/2"	65.0	157.5	267.0	155.0	16.0	77.0	17.0	102.0	70.0	11.0	9.0	73.0
DN80	3"	80.0	190.0	267.0	164.5	16.0	90.2	17.0	102.0	70.0	11.0	9.0	88.9
DN100	4"	100.0	225.0	322.0	216.7	22.0	115.3	22.0	102.0	70.0	11.0	9.0	114.3

### DIMENSION

		unit : inch											
SIZE	PORT	L	E	H	L2	SW	C	ØK	ØK1	Z	Z1	BW	
DN8	1/4"	0.45	2.50	4.41	2.87	0.39	0.56	0.35	1.97	1.42	0.28	0.24	0.54
DN10	3/8"	0.49	2.50	4.41	2.87	0.39	0.69	0.35	1.97	1.42	0.28	0.24	0.67
DN15	1/2"	0.59	2.50	4.41	2.87	0.39	0.86	0.35	1.97	1.42	0.28	0.24	0.84
DN20	3/4"	0.79	2.85	4.41	3.18	0.51	1.08	0.35	1.97	1.42	0.28	0.24	1.05
DN25	1"	0.98	3.19	5.35	3.56	0.51	1.34	0.35	1.97	1.42	0.28	0.24	1.31
DN32	1-1/4"	1.26	3.72	7.28	3.89	0.51	1.68	0.35	1.97	1.42	0.28	0.24	1.66
DN40	1-1/2"	1.50	4.25	7.76	4.54	0.51	1.93	0.55	2.76	1.97	0.35	0.28	1.90
DN50	2"	1.97	4.78	7.76	4.88	0.63	2.40	0.55	2.76	1.97	0.35	0.28	2.37
DN65	2-1/2"	2.56	6.20	10.51	6.10	0.63	3.03	0.67	4.02	2.76	0.43	0.35	2.87
DN80	3"	3.15	7.48	10.51	6.48	0.63	3.55	0.67	4.02	2.76	0.43	0.35	3.50
DN100	4"	3.94	8.86	12.68	8.53	0.87	4.54	0.87	4.02	2.76	0.43	0.35	4.50